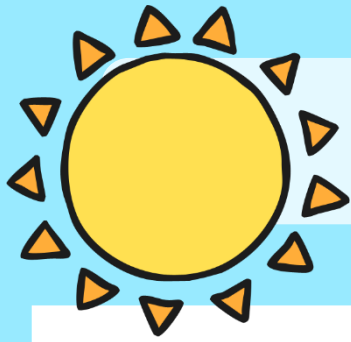




Weather Charts

A task setting
Powerpoint Pack about
weather forecasts



Activities



We are going to keep a **weather chart** everyday in the classroom. You can change the day, date, month and the weather (see links at end).

LO: We are learning to work scientifically by

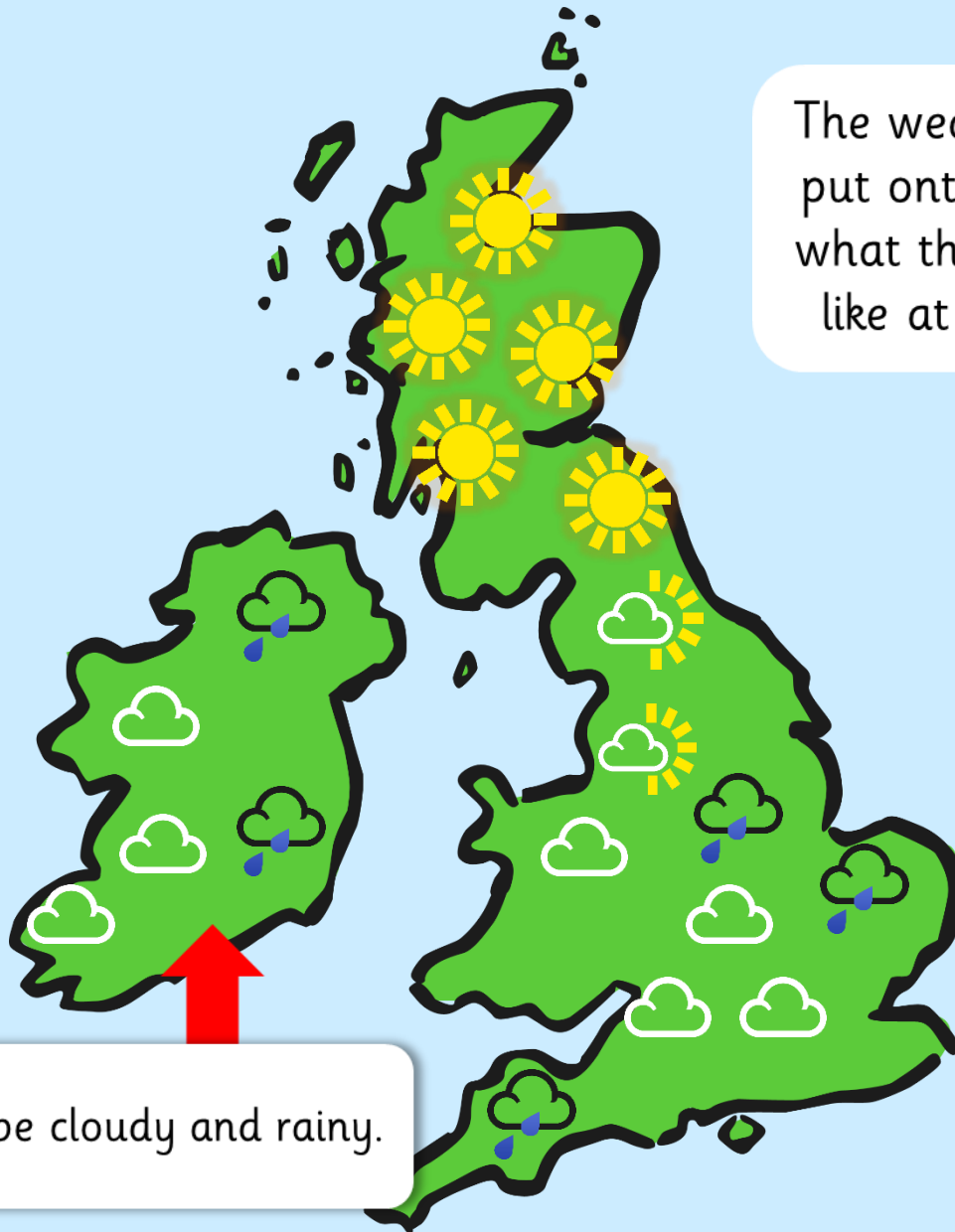
- making tables and charts about the weather.
- Observing changes over time
- Gathering and recording information



Here are some of the symbols that are used to show the different types of weather.

Can you guess what they all mean?





The weather symbols are put onto a map to show what the weather will be like at different places.

In Ireland it will be cloudy and rainy.

Sometimes you need to know more detail about the weather through the day.

UK forecast **Five day** Map Timeline Temp range Text forecast

Sheffield

Change table layout

Fri 20 Dec Sat 21 Dec Sun 22 Dec Mon 23 Dec Tue 24 Dec

UK local time	Warnings for South Yorkshire	Weather	Precip. (%)	Temp. (°C)	Feels like (°C)	Wind speed & direction		UV index	Daily air quality index [BETA]	
				4				0		
				4	-1	12	26	Very good	85	1
	No warnings		<5	6	3	11	27	Very good	80	1
	No warnings		20	6	3	13	28	Very good	82	1
1800	No warnings		60	7	3	17	36	Good	85	0
2100	No warnings		80	8	4	21	45	Good	83	0

Next day »

Issued at: 0900 on Fri 20 Dec 2013 [Review our regional and UK forecasts](#)

Daylight hours

Day	Sunrise	Sunset
Fri 20 Dec	0819	1549

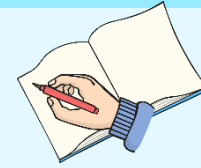
Temperature

It may rain at 6 O'clock.

Sunrise and sunset times



Homework Task



Choose a place in the world you are interested in. You might want to choose somewhere you go on holiday, where your family lives, where your favourite animal can be found or somewhere totally different to where we live.

Research the weather for the next week in this area. You will need to use the internet to help with this (if you cannot use the internet at home come and see me and I will provide you with the information you need).

Watch the weather forecast on the television. **What do the presenters tell you? What does the map tell you? What can you see when you watch it?**

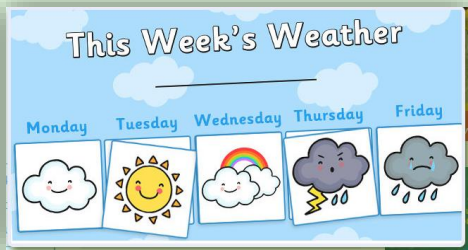
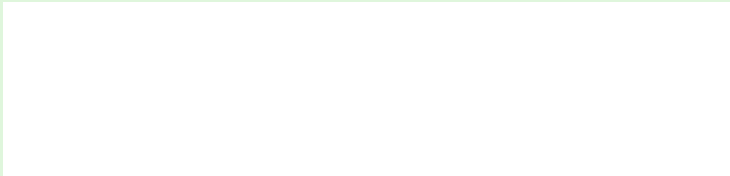
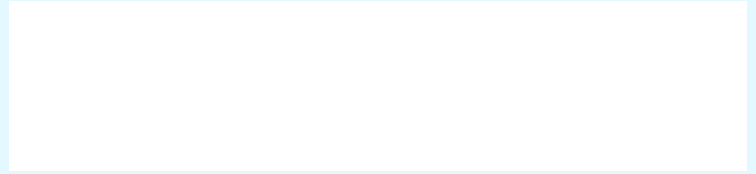
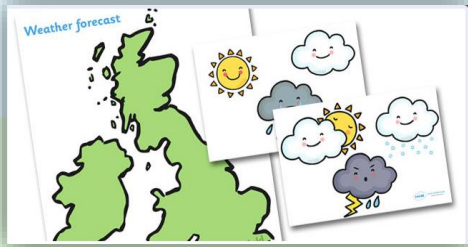
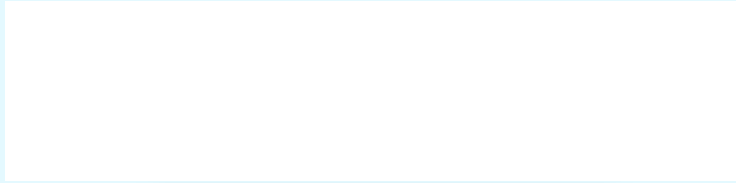
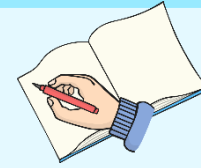
Now make a weather forecast for your chosen area. You will need to make a map and the correct weather symbols and practise a short speech to present to the rest of the class.

I can't wait to see what the weather around the world is like!





Resource Aids





THE END